

DHUMAT 560 T4 3kW F400 (245560181)

GENERAL DATA



SMOKE EXTRACTION BACKWARD CASING FAN 400°C/2h

MANUFACTURING FEATURES

CASING:

- Made of galvanized steel sheet with connection flanges and inspection door.
- Changeable panels.

MOTOR SUPPORT:

- Galvanised steel plate, motor with flanges fixed on 2 supports. Removable plate / support / impeller set.

IMPELLER:

- Backward centrifugal impeller, made of galvanised steel, dynamically balanced and self-cleaning.
- Direct drive on the motor shaft.

MOTOR:

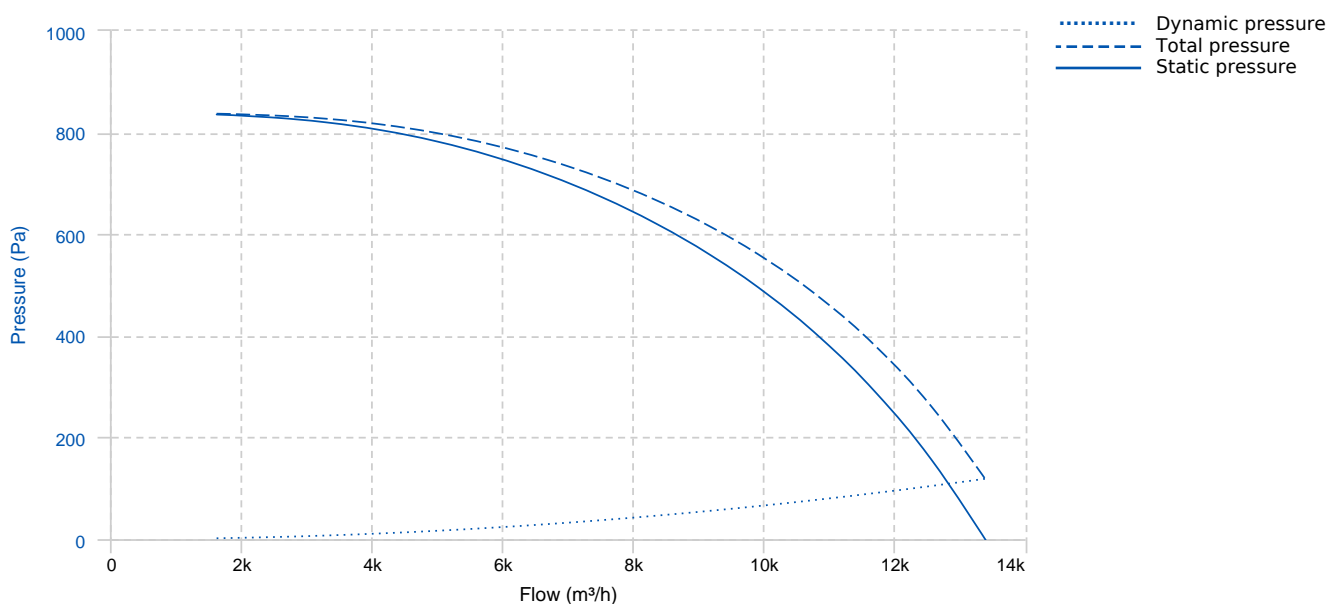
- Three phase motor with IP-55 protection and F class insulation. Manufactured with standard voltages for one speed motors: 230/400V 50Hz up to 4 Kw and 400/690V 50Hz for higher powers of 4 and 6 poles. 2 speed motors: Dahlander. 400V 50Hz

APPLICATIONS

- Smoke extraction in tertiary buildings IGH and ERP.
- Ventilation and smoke exhaust in covered car parks.
- Ventilation in technical, industrial or commercial facilities, kitchens.
- Maximum continuous working temperature: carried air 110°C, environment 60°C.

Official homologation by the European laboratory APPLUS according to EN 12101-3:2015 Certification Nr: 0370-CPR-2681

PERFORMANCE CURVE

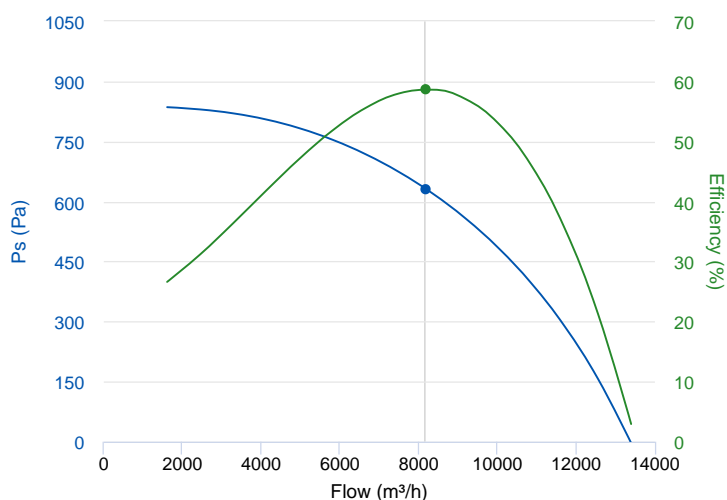


TECHNICAL DATA

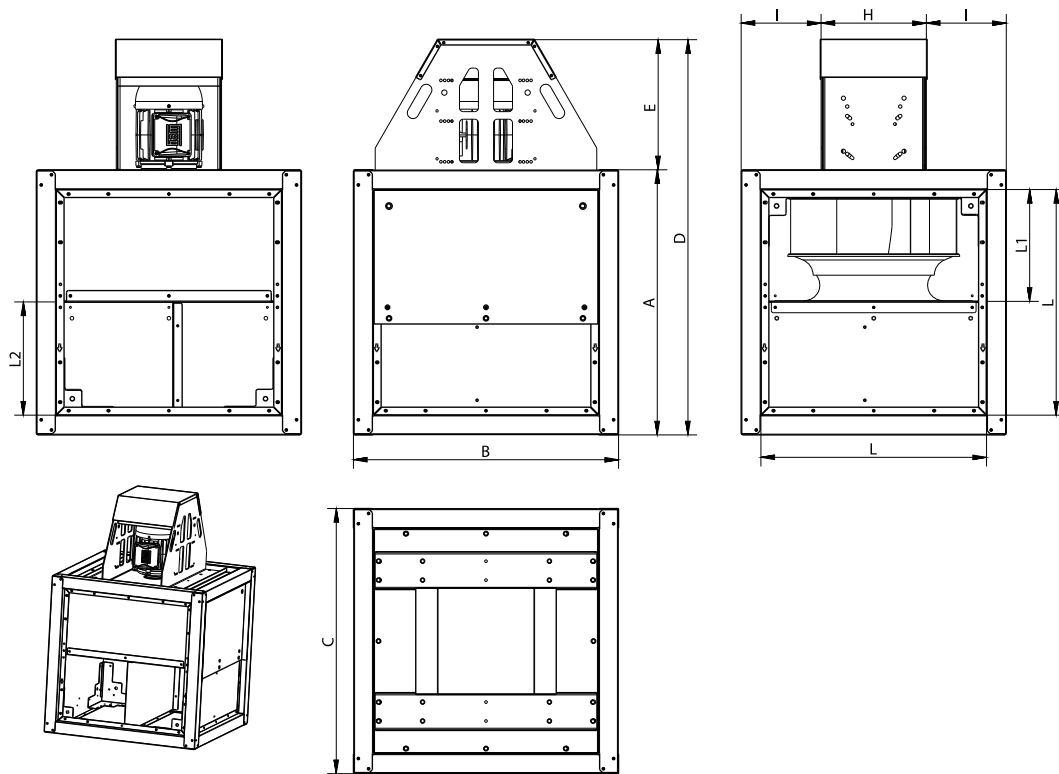
| Fan | | | | | | | |
|-------|------|----------------|--------|----------------|-------------------------|---------------|--------|
| RPM | 1420 | Approx. weight | 194 kg | Max. Flow | 13400 m ³ /h | | |
| Motor | | | | | | | |
| Power | 3 kW | RPM | 1420 | I max. (230V) | 10,7 A | I max. (400V) | 6,17 A |
| Size | 100L | Approx. weight | 34 kg | Efficiency (%) | 87.7 % | FP | 0.82 |

ERP DATA

| Fan data sheet | | |
|---------------------------|--|-----------------------|
| Fan type | Unit for non-residential ventilation (LOT 6) | |
| Typology | Unidirectional | |
| reports.other | None | |
| Type of driver | None | |
| Motor power (kW) | 3 | |
| | Fan values | ERP Requirements 2018 |
| Max. efficiency (%) | 58.65 | 47.89 |
| Effic. Heat recovery (%) | - | |
| Pabs (kW) | 2.587 | |
| Flow (m ³ /h) | 8186.43 | |
| Static pressure (Pa) | 631.34 | |
| Speed (m/s) | 8.61 | |
| SFP (W/m ³ /s) | 1137.6 | |



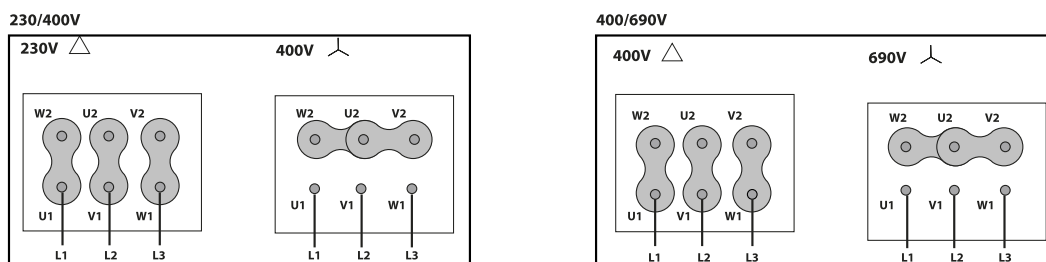
DIMENSIONS



Dimensions (mm)

| | | | | | | | | | |
|----|-------|---|-----|---|-----|---|--------|----|-------|
| A | 900 | B | 900 | C | 900 | D | 1293,5 | E | 343,5 |
| H | 338 | I | 281 | K | 26 | L | 795,7 | L1 | 314,3 |
| L2 | 479,9 | | | | | | | | |

WIRING DIAGRAM



ACCESSORIES



SAFETY SWITCH
INT 25 3P A
REF: INT253PA



SAFETY SWITCH FOR 400°C/2h
INT 400 25A 3P
REF: 508902501



OUTLET FLANGE FOR DHUMAT
EI DHUMAT 560
REF: 965560111



DHUMAT FEET KIT
DKF 500-560
REF: 245569201



OUTDOOR FLANGE WITH BIRD GUARD FOR
DHUMAT
VIS DHUMAT 500-560
REF: 965500001



FREQUENCY SPEED CONTROLLER
SFC 400 III 8A *
REF: SFC400III8

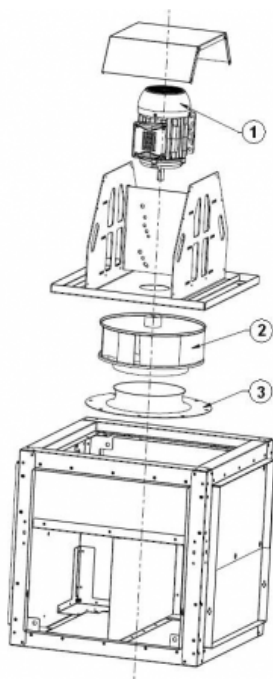


ANTI-VIBRATION RUBBER BLOCK
AVR (GENERIC)



ANTI-VIBRATION SPRING BLOCK
AVS (GENERIC)

SPARE PARTS



| | Code | Model | Qty |
|---|-------------|-----------------------------------|-----|
| 1 | 721001168 | MOTOR 3KW T4 B3 230/400V | x1 |
| 2 | R-279569382 | IMPELLER THRE R63B1 560X160x28 RD | x1 |
| 3 | R-279561680 | INLET CONE ED11 560 | x1 |